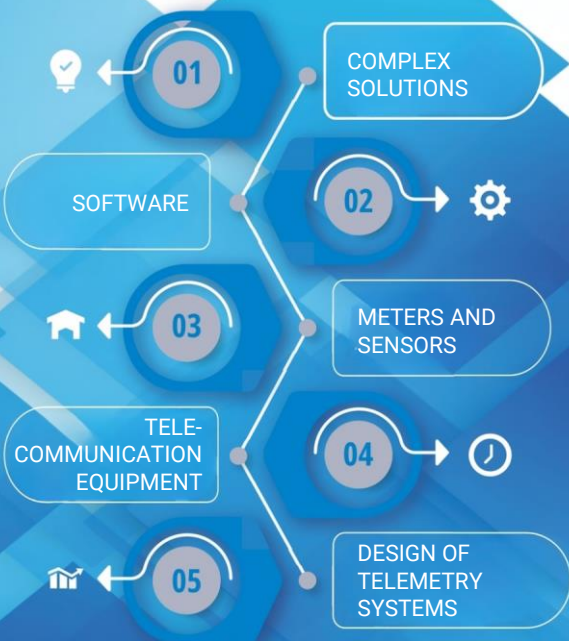




CHRONOS METER

system solutions for utility accounting

www.chronosmeter.com



CONTACTS CHRONOS METER



+7 495 145 76 26



+7 983 620 10 23
WhatsApp | Telegram



sales@chronosmeter.ru



chronosmeter.com



CHRONOS METER TODAY

ON THE MARKET 20 YEARS	PRODUCED 3 m. DEVICES	EQUIPPED 1,900 OBJECTS	WE WORK IN 9 COUNTRIES
-------------------------------------	------------------------------------	-------------------------------------	-------------------------------------

COMPREHENSIVE SOLUTIONS

TO DEVELOPERS	TO WATER UTILITIES COMPANIES	TO PROPERTY MANAGEMENT COMPANIES
---------------	------------------------------	----------------------------------

FULL PRODUCTION CYCLE



EXHAUSTIVE RANGE OF PRODUCTS

SMART METERS SENSORS	TELE-COMMUNICATION EQUIPMENT	SOFTWARE
------------------------	------------------------------	----------

CHRONOS METER ADVANTAGES

DEVELOPMENT AND PRODUCTION IN RUSSIA

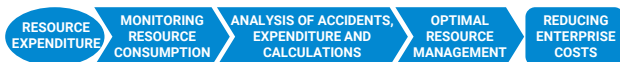
TIGHT DELIVERY TIME

FREE HARDWARE AND SOFTWARE TESTING

FREE 24/7 TECH SUPPORT AND SOFTWARE UPDATES

100% INTEGRATION WITH THIRD PARTY SOFTWARE AND HARDWARE

COMPLEX SOLUTIONS



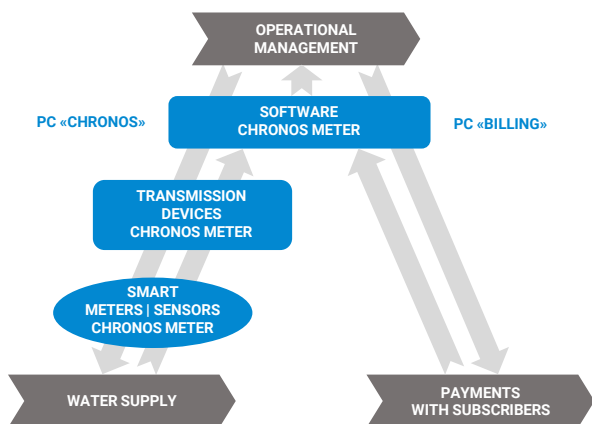
CHRONOS METER PRODUCES ALL NECESSARY COMPONENTS FOR DEPLOYING FULLY AUTOMATED UTILITY ACCOUNTING SYSTEMS AT CUSTOMER'S FACILITIES



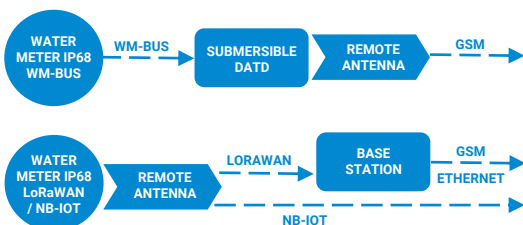
CHRONOS METER OFFERS COMPLEX SOLUTIONS:

FOR WATER SUPPLY COMPANIES

HARDWARE AND SOFTWARE COMPLEX
«DIGITAL WATER SUPPLY»



FOR FLOODED WELLS



SOFTWARE

THE COMPANY HAS DEVELOPED A SERIES OF SOFTWARE PRODUCTS FOR PROCESS AUTOMATION:

- COLLECTION AND PROCESSING OF DATA FROM METERING DEVICES;
- ENSURING THE OPERABILITY OF THE UTILITY INFRASTRUCTURE;
- SETTLEMENTS WITH SUBSCRIBERS.

SOFTWARE PACKAGE «CHRONOS»

PC «CHRONOS» IS DESIGNED FOR DISPATCHING:

- COLLECTING AND PROCESSING DATA FROM METERING DEVICES;
- ENSURING THE OPERABILITY OF THE UTILITY INFRASTRUCTURE.



- Collection of readings from metering devices, event sensors
- Remote resource restriction
- Emergency monitoring
- Data storage
- Generating custom reports
- Integration with related software products
- Open API

SOFTWARE PACKAGE «BILLING»

PC «BILLING» IS DEVELOPED TO AUTOMATE PAYMENTS WITH SUBSCRIBERS AT A NEW TECHNOLOGICAL LEVEL



- Maintaining a database of personal accounts with the necessary data set
- Maintaining a database of contracts and accounting points
- Accounting for accruals, payments and debts
- Collection of payments
- Debt recovery
- Business planning and management reporting

APARTMENT WATER METERS WITH WIRED / RADIO INTERFACES



INTERFACE		NB-IoT	
RS-485		LoRaWAN	
M-Bus		wM-Bus	
Dn	Dn15	MC	B
	Dn20		C
BOX		WARRANTY	
IP54		60 mo.	

- Simplicity of setting up and exploitation
- Open exchange protocol (compatible with leading manufacturers of devices and software)
- Extended archive of indications and emergency situations
- Fixation of external magnetic field impact
- Determining the flow direction
- Built-in check valve

WATER METERS FROM IP68 FOR FLOODED WELLS



INTERFACE		NB-IoT	
		LoRaWAN	
		wM-Bus	
Dn	Dn15	MC	B
	Dn20		C
BOX		WARRANTY	
IP68		60 mo.	

Used to build data collection systems from flooded wells

- Remote antenna up to 5 meters
- Open exchange protocol (compatible with leading manufacturers of devices and software)
- Extended archive of indications and emergency situations
- Fixation of external magnetic field impact
- Determining the flow direction
- Built-in check valve

APARTMENT WATER METERS ULTRASONIC



INTERFACE		NB-IoT	
RS-485		LoRaWAN	
M-Bus		wM-Bus	
Dn	Dn15 Dn20	MC	B C
BOX	IP54	WARRANTY	
		60 mo.	

- Simplicity of setting up and exploitation
- Open exchange protocol (compatible with leading manufacturers of devices and software)
- Extended archive of indications and emergency situations
- Fixation of external magnetic field impact
- Determining the flow direction
- Built-in check valve

READING READERS FOR MECHANICAL WATER METERS



INTERFACE		NB-IoT	
		LoRaWAN	
ANTENNA	I-ANT	MC	B C
ARCHIVE	14 yr.	WARRANTY	
		60 mo.	

Installed on apartment water meters with a modular disk (without an interface for transmitting readings).

- Fixation of accidents (leakage, breakthrough, dismantling of the reader)
- Extended archive of indications and emergency situations
- Fixation of external magnetic field impact
- Determining the flow direction

INDUSTRIAL MULTI-JET WATER METERS WITH PULSE AND DATA MODULE



INTERFACE		NB-IoT	
O-PUL		LoRaWAN	
RS-485		wM-Bus	
M-Bus			
Dn	Dn25- Dn50	MC	B C
BOX	IP54 IP68	WARRANTY	
		54 mo.	

- On request, complete with non-return valve and installation kit
- Version M for immersion in water
- Fixation of external magnetic field impact
- Simplicity of setting up and exploitation
- Extended archive of indications and emergency situations
- Open exchange protocol (compatible with leading manufacturers of devices and software)

INDUSTRIAL TURBINE WATER METERS WITH PULSE AND DATA MODULE



INTERFACE		NB-IoT	
O-PUL		LoRaWAN	
RS-485		wM-Bus	
M-Bus			
Dn	Dn50- Dn150	MC	A- C
BOX	IP54 IP68	WARRANTY	
		54 mo.	

Designed for measuring the volume of cold water: pipelines, apartment buildings, industrial facilities (enterprises) with high flow rates.

- Simplicity of setting up and exploitation
- Extended archive of indications and emergency situations
- Open exchange protocol (compatible with leading manufacturers of devices and software)

APARTMENT HEAT METERS WITH WIRED / RADIO INTERFACES



INTERFACE	NB-IoT
RS-485	LoRaWAN
M-Bus	wM-Bus

Dn	Qn
Dn15	0,6
Dn20	1,5
	2,5

MC	BOX
2	IP54

- There is a modification with 4 pulse inputs for connecting water meters with a pulse output
- Resistant to magnetic fields
- Self-diagnostics function
- Open exchange protocol (compatible with leading manufacturers of devices and software)
- Extended archive of indications and emergency situations

HEAT DISTRIBUTION METERS WITH RADIO INTERFACES



INTERFACE	NB-IoT
	LoRaWAN

BOX	T_{MAX}
IP54	105°C

CHECKING	WARRANTY
10 yr.	60 mo.

The heat energy distributor meter (URTE) is installed on heating equipment (radiators and convectors) in systems in which heat meters cannot be installed.

By measuring the temperature differences between the radiator itself and the external environment, it determines the amount of heat generated. The use of URTE is most effective in metering systems for thermal energy consumption in apartment buildings in the presence of building metering devices.

APARTMENT COLD METERS WITH WIRED / RADIO INTERFACES



INTERFACE	NB-IoT
RS-485	LoRaWAN
M-Bus	wM-Bus

Dn	Qn
Dn15	0,6
Dn20	1,5
	2,5

MC	BOX
2	IP54

- Resistant to magnetic fields
- Self-diagnostics function
- Simplicity of setting up and exploitation
- Open exchange protocol (compatible with leading manufacturers of devices and software)
- Extended archive of indications and emergency situations

GAS METERS ULTRASONIC / JET WITH RADIO INTERFACES



INTERFACE	NB-IoT
	LoRaWAN
	wM-Bus

Dn	Qn
Dn15-	1,6-
Dn32	6,0

MC	WARRANTY
1	36 mo.
1,5	

- In operation, meters are not a source of noise, electromagnetic interference, vibration and gas pollution
- Fixation of external magnetic field impact
- Leaks and ruptures fixation
- Temperature control inside the counting mechanism
- Charge control of the built-in battery
- Open exchange protocol (compatible with leading manufacturers of devices and software)

PULSE COUNTERS WITH WIRED INTERFACES



OUTPUT	RS-485 M-Bus
INPUT	I-PUL 2 - 16
POWER	I-POW 12 лет
BOX	DIN IP65
LIFETIME	12 yr.

Count the number of pulses coming from several pulse meters, followed by data transmission via wired interfaces.

- Modifications available with connection according to the NAMUR scheme
- Operation in the absence of external power supply
- Open exchange protocol
- Remote configuration and software update
- Entered in the register of measuring instruments

PULSE COUNTERS WITH RADIO INTERFACES

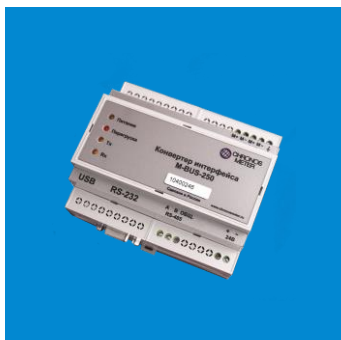


OUTPUT	GSM NB-IoT wM-Bus LoRaWAN
INPUT	I-PUL 4 - 16
POWER	I-POW E-POW
BOX	DIN IP65 IP68
ANTENNA	I-ANT E-ANT SMA

Count the number of pulses coming from several pulse meters, followed by data transmission via radio interfaces.

- IP68 version available (for flooded wells)
- Increased depth of non-volatile archive
- Open exchange protocol
- Remote configuration and software update
- Entered in the register of measuring instruments

INTERFACE CONVERTERS



OUTPUT
RS-485
RS-232
USB

INPUT
M-BUS
50 | 100 | 250

MODE
-30°C
+50°C

WARRANTY
36 mo.

Interface converters are designed to convert signal levels of the M-Bus interface into signal levels of RS-232, RS-485 and USB interfaces.

- Design variants 150, 250, 500 mA
- Short circuit protection
- Easy to set up
- Works with any types of metering devices

MODEMS



OUTPUT
GSM

INPUT
RS-485
RS-232
CAN

MODE
-40°C
+70°C

BOX
DIN
IP53

Modems are designed to collect information from metering devices and transmit data to the server.

- Design variant with RS-485 (до 32 devices)
- Design variant with CAN (до 32 devices)
- Data buffers for systems with "three-wire" interface (RxD, TxD)
- Getting in touch on a set schedule
- Operation in transparent channel mode
- Remote configuration and software update

DEVICES DATA COLLECTION AND TRANSMISSION



OUTPUT	NB-IoT wM-Bus	GSM Ethernet LoRaWAN
INPUT	I-PUL CAN SL	RS-485 RS-232
BOX	DIN P65 IP68	WARRANTY 60 mo.

Designed for automated collection, accumulation of readings from metering devices and data transfer to the server.

- IP68 version available (for flooded wells)
- Modifications available with connection according to the NAMUR scheme
- Presence of a case opening detector
- Open exchange protocol (compatible with leading manufacturers of devices and software)

AUTOMATION SHIELDS



OUTPUT	GSM Ethernet wM-Bus
INPUT	I-PUL CAN RS-485 RS-232 M-BUS
BOX	P-BOX M-BOX
ANTENNA	E-ANT SMA

The automation panel is designed to collect information from resource metering devices and transfer data to the server.

Automation shield includes Device data collection and transmission, M-Bus interface converter, power supply.

- Presence of a case opening detector
- Подключение by RS-485 up to 750 devices
- Design variant with M-Bus (up to 500 devices)
- Design variant with CAN (up to 110 devices)
- Open exchange protocol (support for more than 350 devices)

BASE STATIONS



OUTPUT
GSM
Ethernet

INPUT
LoRaWAN
8

MODE
-40°C
+70°C

BOX
IP55

Base stations are designed to collect readings from metering devices and telecommunications equipment via radio channels and transmit data to the server.

- POE adapter included
- InDoor version available (for indoor installation)
- Open exchange protocol (compatible with leading manufacturers of devices and software)

ANTENNAS



INTERFACE
GSM
LoRaWAN
wM-Bus

dBi
3 -
12,5

CONNECTOR
N
SMA

BOX
IP55
IP65

WARRANTY
36 mo.

Antennas are designed to enhance the reception/transmission of signals from telecommunication equipment transmitted over radio channels.

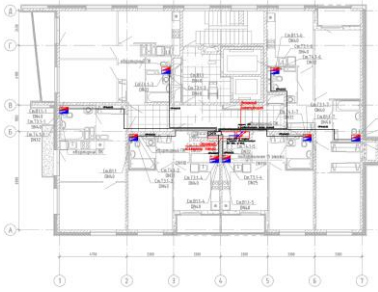
OTHER EQUIPMENT

On the CHRONOS METER website you can see other products, including: Home stations, Mounting accessories, Interface repeaters, Interface splitters, Power supplies, ...



DESIGN OF TELEMETRY SYSTEMS

AT THE CUSTOMER'S REQUEST, WE DESIGN EQUIPPING OBJECTS WITH SMART METERING DEVICES FOR BUILD AN INTELLIGENT AUTOMATED TELEMETRY AND DISPATCHING SYSTEM



LEAD TIME
7
WORKING DAYS

OEM PRODUCTION OF METERING DEVICES

UPON REQUEST, WE MANUFACTURE OUR METERING DEVICES AND TELECOMMUNICATION EQUIPMENT UNDER THE CUSTOMER'S TRADEMARK



ODM ELECTRONICS ASSEMBLY

ON REQUEST, WE ASSEMBLE CUSTOMER'S ELECTRONICS

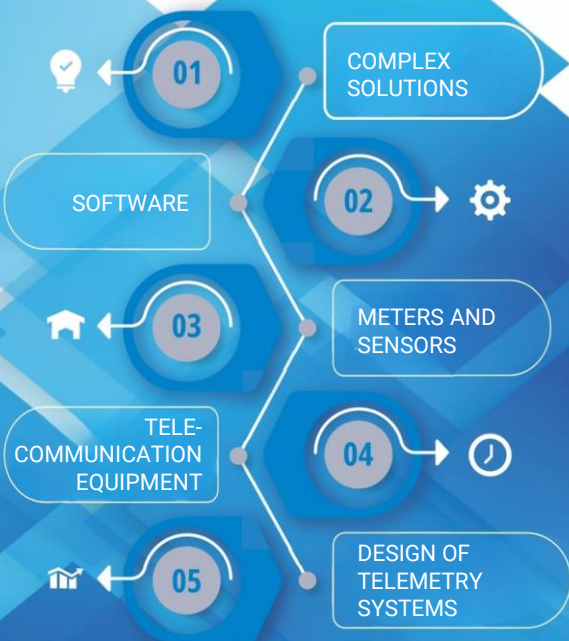
- Optimal manufacturing and development time
- Competitive prices
- High quality standards
- SMD installation with a capacity of up to 70 thousand components per hour
- Installation of microcircuit packages: BGA, QFN, QFP, CSP
- Fabrication of tooling for any type of circuit boards
- Maximum component height up to 15 mm
- Board dimensions (up to 457x457 mm)
- Installation accuracy up to 20 µm
- Automatic optical inspection
- Diagnostics and firmware of microcircuits
- Battery diagnostics



CHRONOS METER

system solutions for utility accounting

www.chronosmeter.com



CONTACTS CHRONOS METER



+7 495 145 76 26



+7 983 620 10 23
WhatsApp | Telegram



sales@chronosmeter.ru



chronosmeter.com

